

全国免费服务热线 | 400-098-1966
NATIONAL SERVICE FREE HOTLINE



康达电梯有限公司

KONDA ELEVATOR CO., LTD.

地址：江西省南昌市望城新区兴业一路366号
Add: No. 366, Xingye Road 1, Wangcheng New Area, Nanchang, Jiangxi
电话(Tel): 0791-83656312 0791-83656212
传真(Fax): 0791-83656618
邮编(P.C.): 330100
网址(Web): www.kondalift.com

本书为一般信息类出版物，我们保留随时更改产品和说明的权利。本书的任何字句，无论其字面意思或含义，对于任何产品及该产品的用途和质量，或者任何购销合同条文的表述与更改均不承担任何责任。

This publication is for general informational purposes and we reserve the right at any time to alter product design and specification. No statement contained should be construed as a warranty or condition for the purpose of lawsuit, whether expressed or implied in this book with regard to any product and its application and correctness for the contract.

2017年8月份印刷



官方网站二维码

KONDA

ESCALATOR / MOVING WALK

自动扶梯·人行道



INTRODUCING ADVANCED
TECHNOLOGIES OF MODERN ELEVATOR INDUSTRY
引进当代电梯业前沿科技



康达自动扶梯/人行道 让城市移动更高效

在繁忙的机场和车站，
在繁华的购物中心或商场，
康达自动扶梯/人行道都能发挥出独特的优势。
将高效、节能与安全完美结合，
保障了大量人流快速输送的同时，
演绎动态的舒适；
顺畅宁静的上下之间，
传递出每时每刻的安全感，
确保人们在公共空间的各个领域畅通无阻。

KONDA ESCALATOR / MOVING WALK
MAKES THE CITY TRANSPORT MORE EFFICIENT



At busy airports and stations,
or in prosperous shopping centers or malls,
Konda Escalator / Moving Walk can play its unique advantage,
to achieve the perfect combination of high efficiency, energy saving and safety,
presenting you with dynamic comfort while guaranteeing the quick transport of large numbers of people.
In smooth and quiet up-and-down process,
it conveys a sense of security at all times,
ensuring people's unimpeded transport in all areas of public space.

康达电梯有限公司

KONDA ELEVATOR CO., LTD.

康达电梯有限公司位于历史悠久、文化底蕴深厚的英雄城——江西省南昌市。占地5万多平方米的康达电梯生产基地就坐落于南昌市望城新区工业园，区位优势明显，航空、铁路、公路等交通方式都非常便利。

公司引进世界先进的电梯自动化控制技术，是一家集电梯研发、制造、销售、安装、维修服务于一体的专业电梯制造企业，年生产整梯能力超过6千台，产品涵盖高速乘客电梯、住宅电梯、医用电梯、载货电梯、观光电梯、自动扶梯、自动人行道、别墅电梯等多个系列，是国内同行中产品最多、额定载荷最大的电梯生产厂家之一。

康达电梯已获得国家质检总局颁发的A级资质《特种设备制造许可证》及江西省质量技术监督局颁发的A级资质《特种设备安装改造维修许可证》，公司产品生产已实现了标准化、规范化；从产品开发设计、供应链客户服务、合同管理到生产制造、安装维保，全程严格执行ISO9001质量管理体系标准，铸就了卓越的产品品质。

公司与华东交通大学机电工程学院建立了全面校企合作关系，并将每年销售收入的5%用于科技研发上，不断增强自主研发实力，目前已取得了11项软件著作权和25个实用新型专利，还进行了3个发明和80项实用新型专利的申报。同时，一座井道提升高度为103.5米、电梯运行速度可达8米/秒电梯试验塔正在建设中。

公司秉承“不断超越，做得更好”的企业精神，遵循“努力，让客户满意”的服务宗旨，构建了覆盖全国的售后服务网络和备品配件供应体系，用一流的产品、一流的服务为客户创造价值，获得了源源不断的市场生命力。

展望未来，康达电梯阔步向前，正朝着智能生产、高效节能、绝对安全的电梯方向发展，将物联网、环保能源等范围的技术全面运用到电梯、自动扶梯、楼宇综合管理服务领域，立志为全球电梯用户提供可信赖的多样化的产品和服务，为促进世界和谐发展、提升人类的生活品质而全力以赴。

ENTERPRISE INTRODUCTION

ESCALATOR
/ MOVING WALK



Konda Elevator Co., Ltd. is located in Nanchang of Jiangxi Province, a hero city of long history and profound cultural deposits. The company's elevator production base with an area of over 50,000 square meters in the Wangcheng New Area Industrial Park of Nanchang has obvious location advantages with very convenient aviation, railways, highways and other means of transportation.

The company, introducing the most advanced elevator automatic control technology in the world, is a professional elevator manufacturing company with integration of elevator research & development, manufacturing, sales, installation and maintenance services. The company has an annual whole elevator production capacity of more than 6,000 elevators. Main products covers series of types such as the high-speed passenger elevator, residential elevator, hospital elevator, freight elevator, panoramic elevator, escalator, moving walkway, villa elevator, which makes the company one of the largest elevator manufacturers with most products and largest rated load among domestic counterparts.

Konda Elevator has obtained A-level qualification of Special Equipment Manufacturing License issued by General Administration of Quality Supervision and A-level qualification of Installation, Alteration, Repair & Maintenance License of Special Equipment issued by Jiangxi Provincial Quality and Technical Supervision and the company's production has achieved standardization and normalization; The enterprise strictly implements the ISO9001 quality management system standards from product development and design, supply chain, customer service and contract management to manufacturing, installation and maintenance, thus building up the superior product quality.

The company establishes comprehensive school-enterprise cooperation with the School of Mechatronic Engineering of East China Jiaotong University and takes 5% of annual sales revenue for technical research and development to continuously enhance the independent research and development strength. So far, the company has obtained 11 software copyrights and 25 utility model patents as well as declared 3-invention and 80-utility-model patents. Meanwhile, an elevator test tower with shaft lifting height of 103.5 meters and elevator running speed of 8 m / s is under construction.

The company adheres to the enterprise spirit of "Further&Better" and follows the service principle of "Do best to make customers satisfied", building up a nationwide after-sales service network and spare parts supply system, creating value for customers with first-class products and service and thus obtaining a steady stream of market vitality.

Looking into the future, Konda Elevator is advancing in big strides, moving in the direction of intelligent production, high efficiency & low energy consumption and absolutely safe elevators and applying technologies within the range of the internet of things, environmental energy and others comprehensively to elevators, escalators and building integrated management services. The company is determined to provide reliable diversified products and services for global elevator users and make effort to promote the harmonious development of the world and improvement of the life quality of human.

自动扶梯 理想的公共空间运载工具

康达自动扶梯，采用欧洲标准设计，充分应用新型材料和国内外先进技术，将安全性、实用性、耐用性和视觉的美感完美融为一体，运行平稳，乘坐舒适，可高效输送大量人流，打造公共空间内理想的运载工具。

Escalator – an ideal public space vehicle

Konda Escalator fully adopts the European standard design as well as new materials and advanced technologies and integrates safety, practicality, durability and visual beauty together. The escalator offers you smooth operation and comfortable ride, which can efficiently transport large numbers of people and create an ideal vehicle in the public space.



运行平稳 乘坐舒适
Smooth operation & comfortable ride



高效运载大量人流
Efficient transport of large numbers of people

PRODUCT INTRODUCTION

ESCALATOR
/ MOVING WALK

KONDA Escalator / Moving Walk
Safe and dependable

安全可靠

主机驱动、链条和踏板系统部件均根据欧洲设计标准和质量标准建造，性能可靠，运行平稳 <
双重超速保护等安全装置遍布扶梯各个部位，保障运行安全 <
控制系统重要器件检测及强大的信息处理能力和故障诊断能力，全面提高扶梯安全性能 <

The main engine's drive, chain and components of step system are manufactured according to the European design and quality standards, with reliable performance and smooth running. <
Dual over-speed protection and other enhanced safety devices are equipped throughout various parts to ensure the safe operation of the escalator. <
The detection of important devices of the control system and the powerful information processing and fault diagnosis capabilities improve the safety performance of the escalator. <



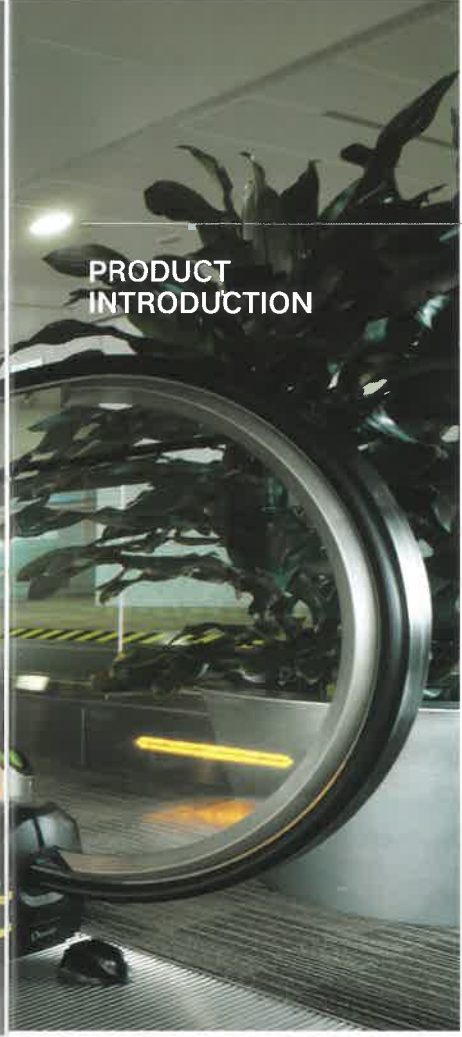
KONDA Escalator / Moving Walk
Efficient operation

高效运行

优化传动系统设计，能耗降低25% <
高效的平衡轴斜齿轮减速机，比传统蜗杆传动效率提高15% <
可选用变频驱动技术，耗电量降低40%，最大限度降低运行成本 <
便捷而人性化的设计，有效提高公共空间内客流密集时段的运输速度和运输量 <



The optimized transmission system design reduces energy consumption by 25%. <
The efficient balance shaft helical gear reducer improves transmission efficiency by 15% compared with the traditional worm device. <
The variable frequency drive technology reduces power consumption by 40% to minimize operating costs. <
The convenient and user-friendly design can effectively improve the transportation speed and volume during the intensive passenger flow period in public space. <



PRODUCT
INTRODUCTION

ESCALATOR
/ MOVING WALK

KONDA Escalator / Moving Walk
With steadiness and security

稳固安全

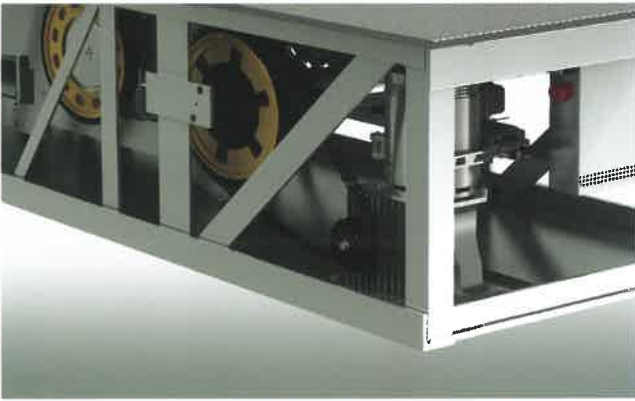
- < 高精度的金属桁架结构紧凑、稳固，极大地提高了整机运行的稳定性和安全性
- < 防滑槽设计，增强短踏板防滑性能，乘坐更安全
- < 梳齿倾斜角度极小，确保购物推车方便自如出入
- < 配有精美耐用的前沿板，挡板以及楼层盖板等部件，精工品质，值得信赖

The precise metal truss structure is compact and stable, greatly improving the stability and security of whole machine operation.

Anti-skid slot design enhances slip resistance of short pedal to provide safer riding.

Minimum comb tilt angle ensures easy access of shopping carts.

The product is equipped with the exquisite and durable front panel, guardboard, floor cover and other components, so that it is of high quality and trustworthy.



自动人行道
完美的大客流运输解决方案

康达自动人行道，将领先技术与高端品质融为一体，追求运行的安全性，设计的人性化和使用的便捷性，为各类公共空间提供完美的大客流运输解决方案，让城市公共空间的人流移动更加顺畅，商务活动更加高效。

Moving walk, a perfect solution for large passenger transport

KONDA Moving Walk integrate the leading technologies and high quality, pursues the operational safety, user-friendly design and convenience of usage and provides perfect large passenger transport solutions for all types of public space, so that people transport in urban public space will be more smooth and business activities will be more efficient.



技术与品质的完美融合
Perfect combination of
technology and quality



顺畅运载大量人流
Smooth transport of large
passenger flow

KONDA Escalator / Moving Walk
With energy-saving operation

绿色运行

- > 高效率的斜齿轮驱动装置和平行式扶手驱动，降低摩擦损耗，减少电耗
- > 红外感应装置自动检测到人行道空载运行时，转入节能模式，降低能耗10~40%
- > 向下运行时能量全部反馈电网，实现了最大限度的节能

- > The highly efficient helical gear driving device and parallel-type handrail drive reduce friction loss and power consumption
- > The escalator will change into energy-saving mode once infrared sensing device automatically detects the no-load operation of moving sidewalks, reducing energy consumption by 10% to 40%
- > All the energy will be fed back to grid when going downward, achieving maximum energy saving

扶手带颜色 Handrail Color



黑色 (标配)
Black (Standard)



灰色 (选配)
Gray (Optional)



蓝色 (选配)
Blue (Optional)

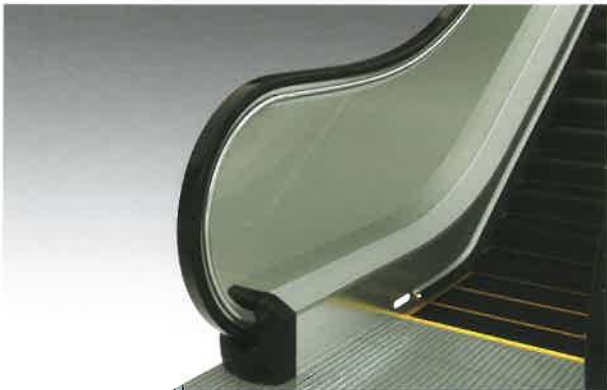


红色 (选配)
Red (Optional)

护壁板颜色 Balustrade Color



透明 (标配)
Transparent (Standard)



灰色 (选配)
Gray (Optional)

DECORATION
SERIES

ESCALATOR
/ MOVING WALK

围裙照明 Skirting Lighting



白色 (选配)
White (Optional)



黄色 (选配)
Yellow (Optional)

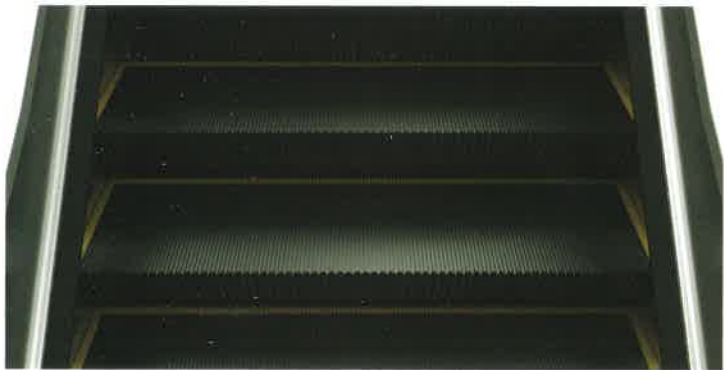


红色 (选配)
Red (Optional)

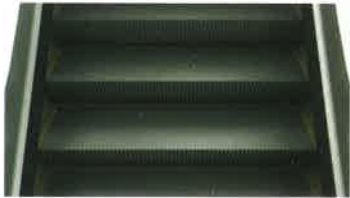


蓝色 (选配)
Blue (Optional)

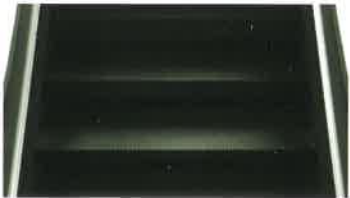
梯级 Step



黑色不锈钢C型塑料边框 (标配)
Black Stainless Steel C-Type Plastic Frame (Standard)



边框喷涂C型 (选配)
Frame Spraying C-Type (Optional)

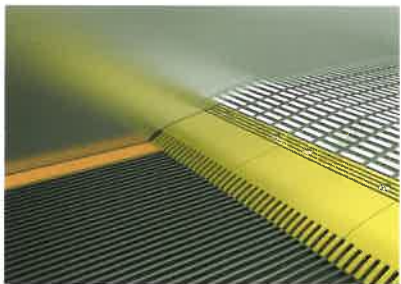


黑色铝合金 (选配)
Black Aluminum Alloy (Optional)

梳齿 Comb Teeth



铝 (标配)
Aluminum (Standard)



铝表面黄色喷漆 (选配)
Aluminum Surface Yellow Paint (Optional)

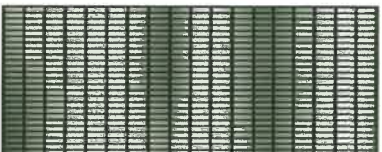
前沿板 Landing Plate



整体式铝合金 (标配)
One-piece Aluminum Alloy (Standard)

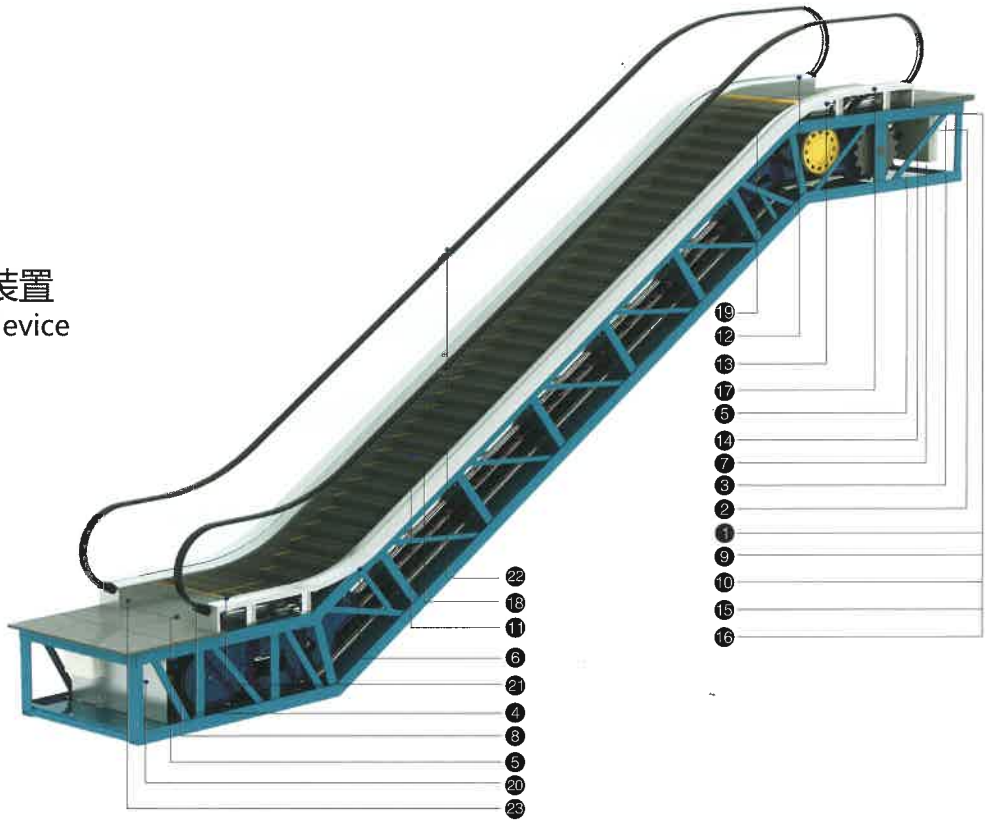


不锈钢条纹贴片 (选配)
Stainless Steel Striped Patch (Optional)



不锈钢方块贴片 (选配)
Stainless Steel Square Patch (Optional)

自动扶梯安全装置
Escalator safety device

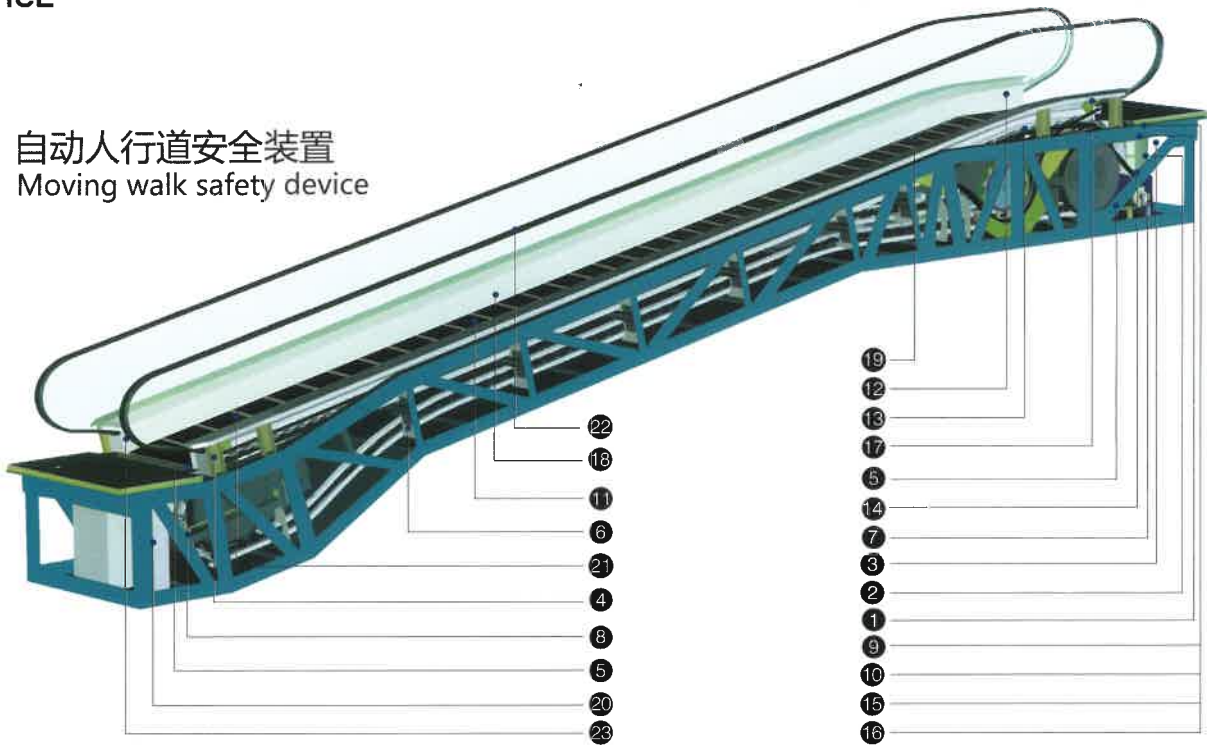


标配功能 Standard functions	功能说明 Description of functions
1. 缺相、错相保护 Lack of phase, error phase protection	如查发生缺相或错相，自动扶梯（自动人行道）将自动停止。 If lack of phase or error phase has been checked out, the escalator (moving walkway) will automatically stop the operation.
2. 马达超载保护 Motor over-load protection	电流超过额定电流的15%则自动扶梯自动停止运行。 When the current exceeds 15% of the current rating, the escalator will automatically stop the operation.
3. 电气回路保护 Electric loop protection	提供自动电路断开装置以保护自动扶梯（自动人行道）的电路和电源部件。 It offers the automatic circuit disconnecting device to protect the circuit and mains components of the escalator (moving walkway).
4. 扶手带入口保护 Handrail inlet protection	当外物被夹在扶手带入口时，自动扶梯（自动人行道）会自动停止运行。 When some foreign substance has been clipped in the handrail inlet, the escalator (moving walkway) will automatically stop the operation.
5. 梳齿板安全保护装置 Comb plate safety device	当外物被夹入梳齿时，自动扶梯（自动人行道）将自动停止运行。 When some foreign substance has been clipped in or between the combs, the escalator (moving walkway) will automatically stop the operation.
6. 梯级塌陷保护装置 Step sagging protection device	当发现梯级有异常的弯曲时，自动扶梯（自动人行道）会在梯级进入梳齿板前停止运行。 When there is abnormal step bending, the escalator (moving walkway) will stop the operation before the step entering into the comb plate.
7. 驱动链断裂保护 Broken drive-chain safety device	当驱动链被过度拉伸或断裂时，自动扶梯（自动人行道）将自动停止运行。 when the drive-chain has been over-stretched or it is broken, the escalator (moving walkway) will automatically stop the operation.
8. 梯级链断裂保护 Broken step chain protection	当梯级（板）链被过度拉伸或断裂时，自动扶梯（自动人行道）将自动停止运行。 when the step (plate) chain has been over-stretched or it is broken, the escalator (moving walkway) will automatically stop the operation.
9. 超速保护 Over-speed protection	当自动扶梯（自动人行道）超速，将自动停止运行。 When there is over-speed to the escalator (moving walkway), it will automatically stop the operation.
10. 非操作逆转保护 Direction reversal protection	当逆转操作而违反了预定的运行方向，自动扶梯（自动人行道）将自动停止运行。 when it comes the unintentional reversal of the direction of travel, the escalator (moving walkway) will automatically stop the operation.
11. 警戒线 Security line	黄色合成树脂警戒线位于自动扶梯踏板的前部和两边，以防止乘客踏入相邻梯级的边缘及梯级和围裙板之间，在梯级两边的警戒线高于踏板表面（自动人行道提供可选黄色喷漆警戒线）。 The yellow synthetic resin security line is located in the front position and two sides of the escalator tread so that the passengers will not tread in-between the edge of the adjacent step and the lift group lengthened skirt panel. The security line on both sides of the step is higher than the tread surface. (The moving walkway offers the selective yellow spray-painted security line.)
12. 紧急停止按钮 Emergency stop button	当按下该按钮时，自动扶梯（自动人行道）将停止运行。 When the button has been pressed down, the escalator (moving walkway) will stop the operation.

SAFETY
DEVICE

ESCALATOR
/ MOVING WALK

自动人行道安全装置
Moving walk safety device

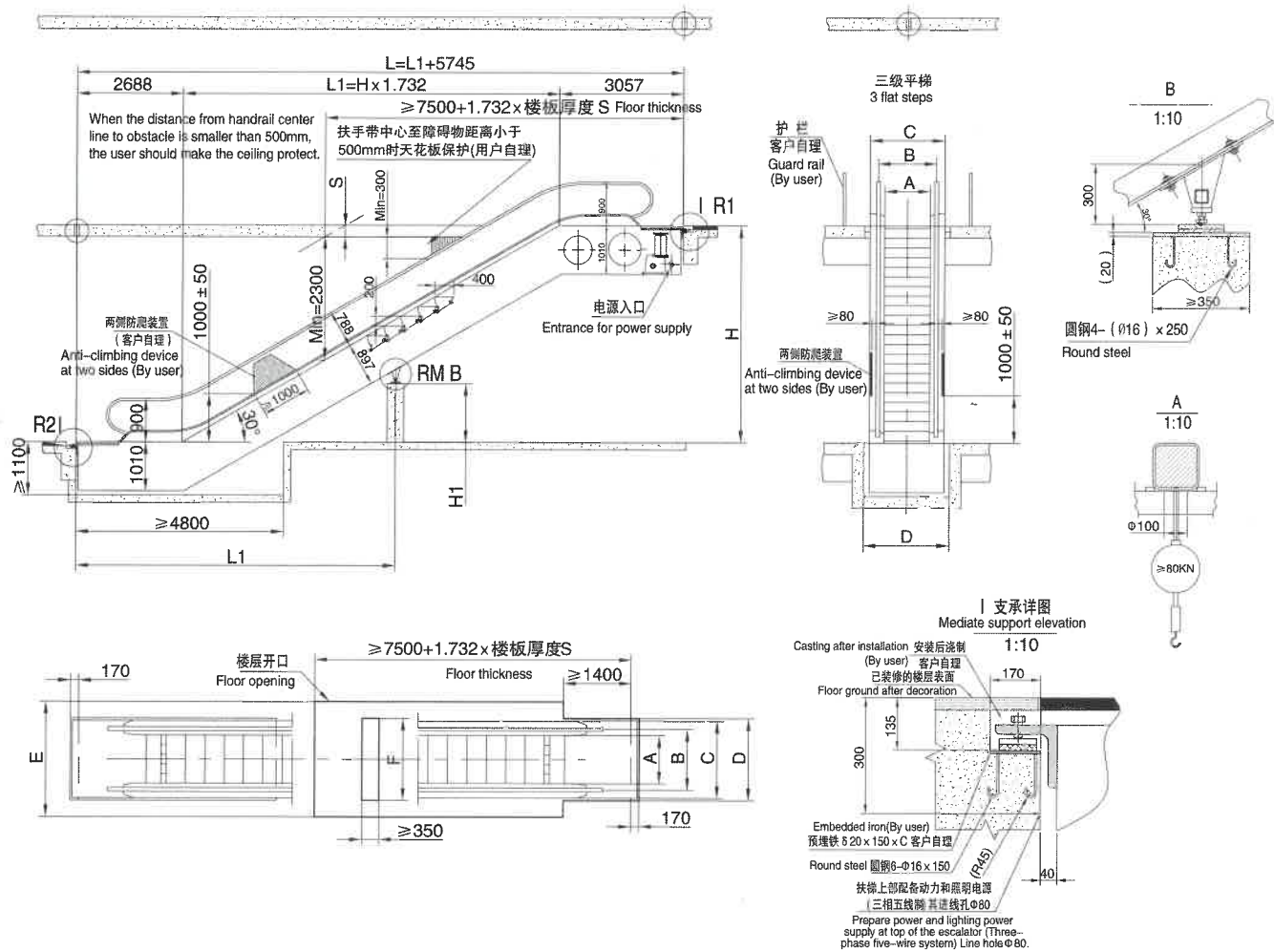


13. 围裙板保护 Skirt panel protection	当外物被夹在围裙板和梯级之间时，自动扶梯（自动人行道）将自动停止运行。 When some foreign substance has been clipped in between the skirt panel and the step, the escalator (moving walkway) will automatically stop the operation.
14. 制动器保护 Brake protection	当电力不足或任一安全装置动作时，制动装置将通过弹簧弹力作用使制动功能生效，使自动扶梯（自动人行道）停止运行。 When the electric force falls short of supply or it acts any of the safety device, the brake function goes into effect by the safety device through the spring resilience action. In this way, the escalator (moving walkway) stops the operation.
15. 检修安全开关 Safety inspection switch	检修保养时，防止扶梯启动的安全装置。 It is a safety device to prevent from the escalator starting during the inspection and maintenance.
16. 启动警铃装置 Alarm bell starting device	扶梯启动时警铃响起，以提醒乘客安全。 The alarm bell rings when it starts the escalator in order to remind the passengers of the security matters.
17. 扶手带断裂保护装置 Control device for handrail breakage	当扶手带断裂时，自动扶梯将停止运行。 When the handrail is broken, the escalator will automatically stop the operation.
18. 围裙板刷 Skirt panel brush	在围裙板和梯级之间装有刷子使乘客的鞋子不会碰到围裙板（不仅限于自动扶梯）。 The brush that has been installed between the skirt panel and the step will prevent the passengers from touching the skirt panel. (It is not merely restricted to the escalator.)

选配功能 Option functions	功能说明 Description of functions
19. 梯级照明 Step illumination	扶梯上下端，梯级下部装有照明以提醒乘客注意安全。 Illumination exists in the upper and lower ends of the escalator, in the lower part of the step in order to remind the passengers of the security matters.
20. VVVF变频控制技术 VVVF variable frequency energy-saving system	选用频率变换器后，能有效的降低能源消耗。 When chooses the frequency converter, it can effectively reduce the energy consumption.
21. 梳齿照明 Comb illumination	照明被安装在靠近梳齿板旁的围裙板上，为梯级和梳齿板提供照明以便乘客安全的乘坐自动扶梯。 The illumination has been installed in the skirt panel near the comb plate. It offers the lighting for the step and the comb plate. It is more convenient for the passengers to up and down the escalator.
22. 扶手照明 Handrail illumination	扶手照明安装在扶手支架内，柔和的光线为运行中的自动扶梯增添了几份灵气。 The handrail illumination has been installed in the handrail frame. The gentle light adds charm to the running escalator.
23. 自动启动/停止 Automatic start / stop	位于楼层板附近的红外线传感器可以检测到进入楼层板的乘客，并自动开始运行，当所有乘客离开后会自动停止运行，以节约能耗。 有扫描传感器和传统的导向杆方式可供选择。 The infrared ray sensor which is near the floor plate can detect the passenger that enter into the floor plate. Then it will automatically start the operation. After all the passengers leave, it will automatically stop the operation again in order to save the energy loss. Scanning sensor and traditional guide rod are available for your choice.

自动扶梯土建参数

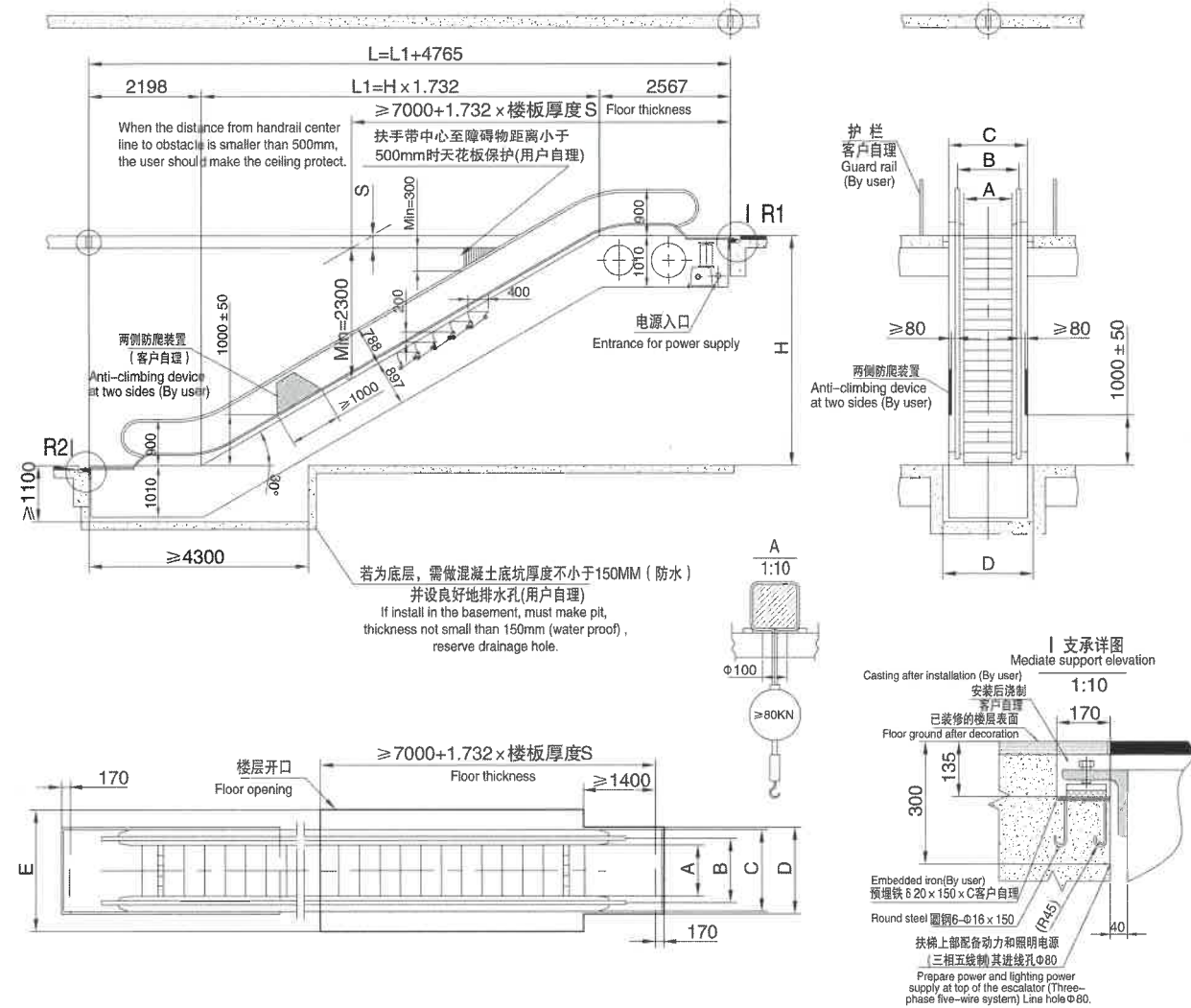
30° 自动扶梯土建布置图 (3个水平梯级)
30° Escalator construction sketch (3 flat steps)



型号 Model No.	KDF30-600(4500p/hour)					KDF30-800(6750p/hour)					KDF30-1000(9000p/hour)				
	N.W. (KN)	R1(KN)	R2(KN)	RM(KN)	Motor Pauer (KW)	N.W. (KN)	R1(KN)	R2(KN)	RM(KN)	Motor Pauer (KW)	N.W. (KN)	R1(KN)	R2(KN)	RM(KN)	Motor Pauer (KW)
6500	83	75	59	96	8	88	84	76	105	11	91	88	76	109	11
7000	86	82	64	103	8	92	87	80	110	11	95	91	79	115	13
7500	89	85	69	108	11	95	91	79	115	11	98	94	83	120	13
7900	93	89	75	113	11	98	95	83	122	11	103	98	86	125	13

型号 Model No.	A	B	C	D	E
KDF30-600	600	837	1140	1200	1837
KDF30-800	800	1037	1340	1400	2037
KDF30-1000	1000	1237	1540	1600	2237

30° 自动扶梯土建布置图 (2个水平梯级)
30° Escalator construction sketch (2 flat steps)



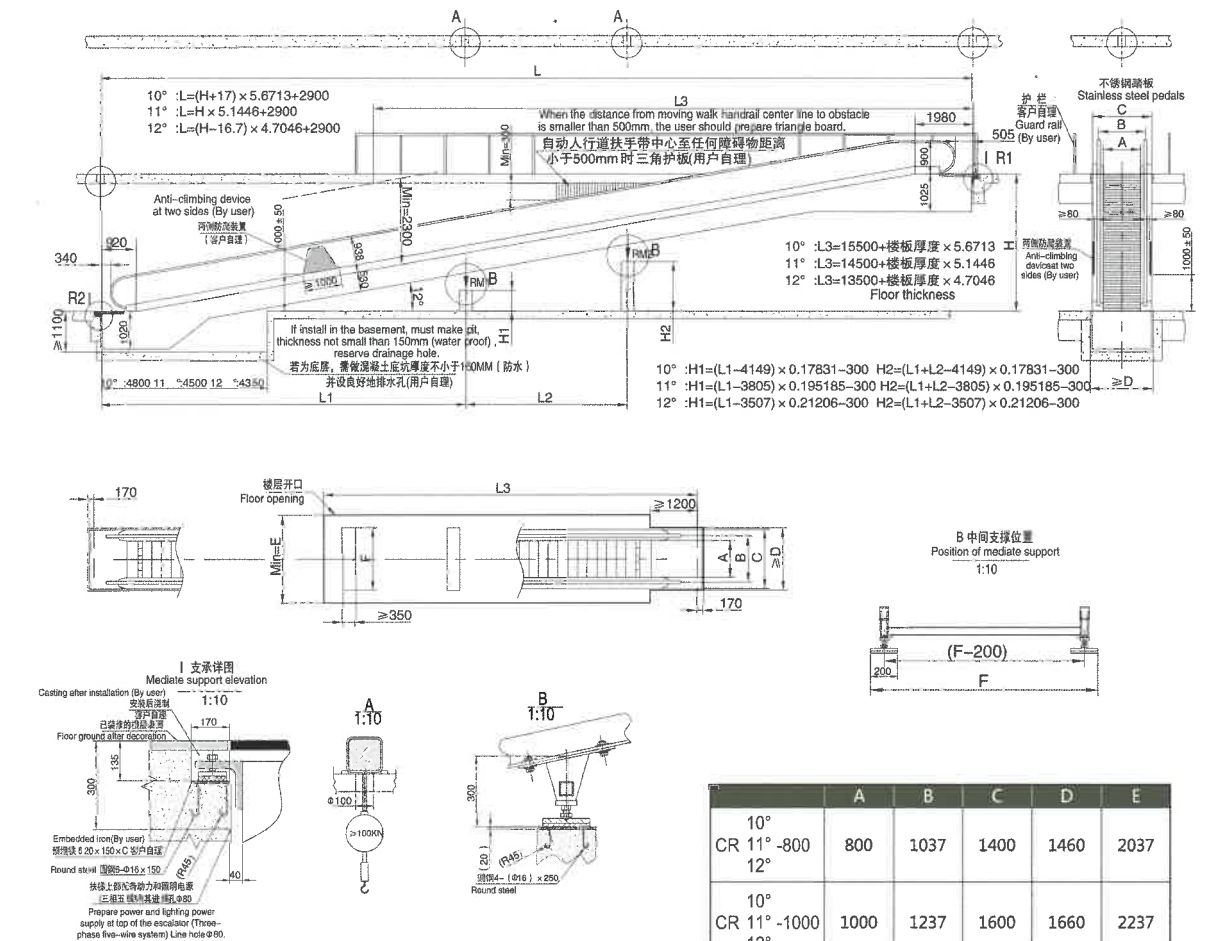
型号 Model No.	KDF30-600(4500p/hour)				KDF30-800(6750p/hour)				KDF30-1000(9000p/hour)			
	N.W. (KN)	R1(KN)	R2(KN)	Motor Pauer (KW)	N.W. (KN)	R1(KN)	R2(KN)	Motor Pauer (KW)	N.W. (KN)	R1(KN)	R2(KN)	Motor Pauer (KW)
3000	57	46	41	5.5	59	52	47	5.5	60	56	50	5.5
3560	60	49	44	5.5	63	56	50	5.5	64	60	53	7.5
4000	64	52	47	5.5	67	60	54	5.5	67	64	57	7.5
4500	68	56	50	5.5	71	64	57	7.5	71	67	60	7.5
5000	71	59	53	5.5	74	68	60	7.5	74	71	64	8
5500	75	62	56	5.5	82	74	66	7.5	82	77	69	11
6000	79	65	59	7.5	86	78	69	8	85	81	72	11

型号 Model No.	A	B	C	D	E
KDF30-600	600	837	1140	1200	1837
KDF30-800	800	1037	1340	1400	2037
KDF30-1000	1000	1237	1540	1600	2237

[illegible]

型号 Model No.	KDF35-600(4500p/hour)				KDF35-800(6750p/hour)				KDF35-1000(9000p/hour)			
Rising height mm	N.W. (KN)	R1(KN)	R2(KN)	Motor Power (KW)	N.W. (KN)	R1(KN)	R2(KN)	Motor Power (KW)	N.W. (KN)	R1(KN)	R2(KN)	Motor Power (KW)
3000	54	43	39	5.5	56	49	44	5.5	60	56	50	5.5
3560	57	43	41	5.5	60	52	47	5.5	64	60	53	7.5
4000	60	49	44	5.5	63	56	50	5.5	67	64	57	7.5
4500	64	52	46	5.5	66	59	55	7.5	71	67	60	7.5
5000	67	54	49	5.5	70	62	56	7.5	74	71	64	8
5500	70	57	51	5.5	73	65	59	7.5	82	77	69	11
6000	73	60	54	7.5	76	69	61	8	85	81	72	11

型号 Model No.	A	B	C	D	E
KDF35-600	600	837	1140	1200	1837
KDF35-800	800	1037	1340	1400	2037
KDF35-1000	1000	1237	1540	1600	2237



10°		A=1000						A=800					
H(mm)	L(mm)	N.W.(KN)	R1(KN)	R2(KN)	RM1(KN)	RM2(KN)	P(KW)	N.W.(KN)	R1(KN)	R2(KN)	RM1(KN)	RM2(KN)	P(KW)
2500	17175	90	51	43	85		7.5	87	45	37	74		7.5
3000	20010	100	57	49	96		8	97	51	43	85		8
3500	22846	111	65	56	108		11	107	58	49	96		11
4000	25682	121	70	62	120		11	117	62	55	106		11
4500	28517	132	77	68	131		13	127	68	60	115		11
5000	31353	142	59	50	96	97	13	137	49	40	78	79	13
5500	34189	153	66	57	108	109	15	147	55	46	98	99	13
6000	37024	163	72	63	130	131	15	157	61	52	110	111	15

11°		A=1000						A=800					
H(mm)	L(mm)	N.W.(KN)	R1(KN)	R2(KN)	RM1(KN)	RM2(KN)	P(KW)	N.W.(KN)	R1(KN)	R2(KN)	RM1(KN)	RM2(KN)	P(KW)
2500	15762	85	49	41	78		7.5	82	43	35	67		7.5
3000	18334	94	55	47	89		7.5	91	49	41	78		7.5
3500	20906	104	61	53	99		8	100	54	46	87		8
4000	23478	114	68	59	112		11	110	60	52	98		8
4500	26051	123	73	65	124		11	119	65	57	107		11
5000	28623	133	80	71	135		13	128	70	61	117		11
5500	31195	142	60	51	97	98	13	137	50	41	97	80	13
6000	33768	152	66	57	108	109	15	146	56	47	91	92	13

12°		A=1000						A=800					
H(mm)	L(mm)	N.W.(KN)	R1(KN)	R2(KN)	RM1(KN)	RM2(KN)	P(KW)	N.W.(KN)	R1(KN)	R2(KN)	RM1(KN)	RM2(KN)	P(KW)
2500	14583	80	46	38	72		5.5	78	41	33	63		5.5
3000	16935	89	52	44	83		7.5	86	46	38	72		5.5
3500	19288	98	58	50	93		7.5	95	51	43	81		7.5
4000	21640	107	64	55	104		8	103	56	48	90		7.5
4500	23992	115	69	61	115		11	111	61	53	99		8
5000	26344	124	75	66	125		11	120	66	57	109		11
5500	28697	133	81	72	136		13	128	71	52	118		11
6000	31049	142	61	52	98	99	13	136	54	46	85	86	13

土建安装须知

除了确保合同土建的各尺寸和要求，
以下的要求也应达到。

为了确保扶梯和人行道的使用安全，自由空间必须在各层站处提供足够大的空间。（参见右最小尺寸图）

C=扶手带中心宽度

Besides complying with the drawing of the contract, attention should also be drawn to the following

To ensure the safety of the escalator and moving walk, free space should be large enough in the landing area. (See the minimum size right)

C=handrail belt width

顶空安全距离

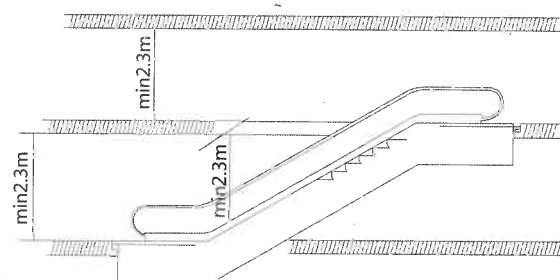
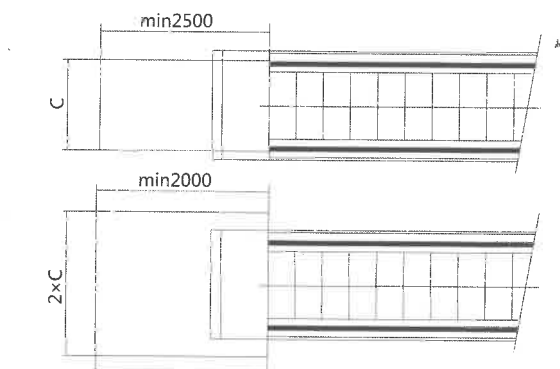
在梯级/踏板上的任意点上，至少有2.3米不受任何障碍的安全距离。

特别注意！如果一台扶梯上的另一台扶梯的提升高度<3.3米，就不可能达到2.3米的顶空安全距离。

Vertical safety distance

There should be at least 2.3m upside safety distance starting upward from the step board.

Notice: if the vertical rise of one escalator, which is installed above another one, is less than 3.3m the upside safety distance can not reach 2.3m.



自动扶梯（自动人行道）安装 必须保证的水平安全距离

扶手带外边缘至墙体或其它障碍物的水平安全距离必须大于80mm。

梯级/踏板区上方垂直安全距离必须大于2.3m。

扶手带区上方垂直安全距离必须大于2.1m。

对楼面开口或扶梯/人行道交叉布置，扶手带中心到障碍物的水平安全距离必须大于0.5m。

如未达到要求，需设置专门的防护装置和防撞挡板。

Escalators and moving walk horizontal safety distance

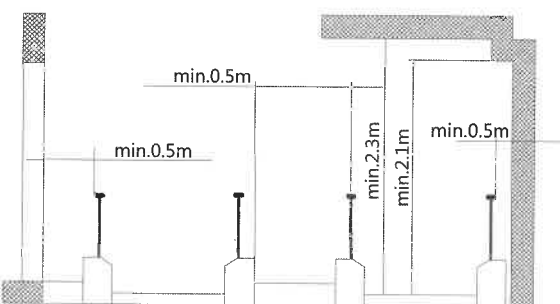
The horizontal distance between the handrail edge and the wall or other objects should be more than 80mm.

The vertical distance above the step board should be more than 2.3m.

The vertical distance above the handrail space should be more than > 2.1m

In case of floor spaces or the cross layout of escalators and moving walk, the safety distance between the handrail outer edge and the object should be more than 0.5m.

If the above-mentioned requirements cannot be met, a special protection device and a bumper rail should be used.



KONDA ELEVATOR

Dedicated to building a sound service system

全心全力 打造完善的服务体系



专业的安装维保团队

公司拥有一支经验丰富的安装维保团队，定期进行专业知识培训，使每位员工都能不断提高自己的安装维修水平，以便更好地为客户服务。

完备的售后备件供应体系

公司奉行“以顾客为中心”的企业宗旨，售后服务网络覆盖全国范围各大中小城市，完善的备品配件供应体系，可就近取材，确保以最快的速度提供最优的服务。

24小时服务热线

专门开通24小时服务热线，第一时间提供电梯相关的各种咨询及意见。

Professional installation & maintenance team

The company has an experienced installation and maintenance team, with regular professional training, to make each employee continue to improve their installation and maintenance skills in order to better serve our customers.

Complete after-sale and spare parts supply system

The company sticks to "customer-centric" business purposes, with a nationwide after-sale service network covering all sizes of cities. The complete spare parts supply system makes it possible to supply any spare parts from the nearest place to ensure the best service at fastest speed.

24-hour service hotline

A 24-hour hotline is specially opened in order to provide a variety of elevator-related consulting and advice.

KONDA
ESCALATOR / MOVING WALK



专业维保团队
Professional repair & maintenance team



售后备件体系
After-sale spare parts system



服务热线
Service hotline

