

全国免费服务热线 | 400-098-1966
National Service Free Hotline

康达电梯有限公司
KONDA ELEVATOR CO., LTD.

地址：江西省南昌市望城新区兴业一路 366 号
Add: No. 366, Xingye Road 1, Wangcheng New Area, Nanchang, Jiangxi
电话 (Tel): 0791-83656618 0791-83656589 0791-83656512
传真 (Fax): 0791-83656212
邮编 (P.C.): 330100
网址 (Web): www.kondalift.com

本书为一般信息类出版物，我们保留随时更改产品和说明的权利。本书的任何字句，无论其字面意思或含义，对于任何产品及该产品的用途和质量，或者任何购销合同条款的表述与更改均不承担任何责任。
This publication is for general informational purposes and we reserve the right at any time to alter product design and specification. No statement contained should be construed as warranty or condition for the purpose of lawsuit, whether expressed or implied in this book with regard to any product and its application and quality or any correctness for the contract.

2022 年 10 月份印刷



扫描二维码
关注微信公众号



扫描二维码
进入官方网站



康达电梯，唱响民族品牌！

别墅电梯



INTRODUCING ADVANCED TECHNOLOGIES IN MODERN
ELEVATOR INDUSTRY
引进当代电梯业前沿科技



康达电梯有限公司

KONDA ELEVATOR CO., LTD.

康达电梯有限公司坐落在文化历史悠久的英雄城——南昌市望城新区工业园，是一家引进世界先进的电梯自动化控制技术，集电梯研发、制造、销售、安装、维修服务为一体的专业制造企业。公司遵循“不断超越，做得更好”的企业精神，确立了以客户为关注焦点，以客户满意为产品和服务工作的评价标准，立志为全球提供可信赖的多样化产品。

公司自主研发实力卓越，产品涵盖了高速乘客电梯、住宅电梯、医用电梯、载货电梯、观光电梯、自动扶梯、自动人行道、别墅电梯、无机房货梯等产品在内的系列产品及服务。目前，康达电梯已先后开发了多个系列十多种规格的电梯，且已达到国内和国际先进水平，并具备绿色节能等优点，是国内同行中产品最多、额定载荷最大的电梯生产厂家之一。

康达电梯将朝着生产节能、少污染、低噪声、长寿命、绿色环保电梯方向发展。我们将IT环境能源等范围的技术全面运用到电梯、自动扶梯、楼宇综合管理服务等领域，致力于用先进的技术为城市开发服务。

迄今，康达公司全体员工锐意进取，在设计、生产、安装、维保各项业务上都取得不俗成绩，公司的设计、生产、安装、维修保养能力均得到国家认可，已经获得国家有关部门颁发的《特种设备制造许可证(A级)》及《特种设备安装改造维修许可证(A级)》，康达公司将用更优良的产品、更规范精湛的技术，向所有用户提供最优秀的服务。



KONDA Elevator Co.Ltd. is located in Wangcheng New District Industrial Zone, Nanchang City, Jiangxi Province, China which has been reputed as "City of Hero" with a long cultural history. It introduces the world's advanced elevator automation control technology. It is a professional elevator manufacturer introducing the worldwide advanced technology of automation control and integrating the elevator R & D, manufacturing, marketing, installation and maintenance services into one body. By following the entrepreneurial spirit "constantly go farther and do better" and the evaluation criterion of products and services—"focusing on and satisfying clients", the company is determined to provide reliable diversified products for global elevator users.

Its products contain high-speed passenger elevators, residential elevators, medical service elevators, freight elevators, sight-seeing elevators, escalators, moving walkways, villa elevators and no-machineroom freight elevators, etc., followed by strong supporting services. By now, the company, as one of the domestically and internationally largest elevator manufacturers with the greatest variety of products capable of carrying the heaviest

rated load, has developed various series of elevators reaching both domestically and internationally advanced level, with various kinds of specifications and with the advantage of green energy.

Konda Elevator Company will be moving in the direction of producing elevators of energy saving, low pollution, low noise, long life and green environment-friendliness. We've been applying the technology of IT-environment energy into the comprehensive field of elevators, escalators and building integrated services so as to serve the urban development via advanced technology of manufacturing elevators.

So far, by forging ahead with determination, the staff of Konda have gained outstanding achievements in designing, producing, installing and maintenance, the abilities of which have been accepted by the government, which issued both Manufacture License of Special Equipment(Class A) and Installation, Alteration, Repair & Maintenance License of special Equipment(Class A) to the company. Hence, Konda will serve all its users with even better products and even more standard and exquisite technology.



Traction Type Villa Elevator

曳引式别墅电梯

康达别墅电梯，秉承欧洲私人电梯领域顶尖技术，传承国际经典设计理念，融汇艺术性，实用性与时代性于一体，与别墅、私人豪宅的高层次品味十分吻合。

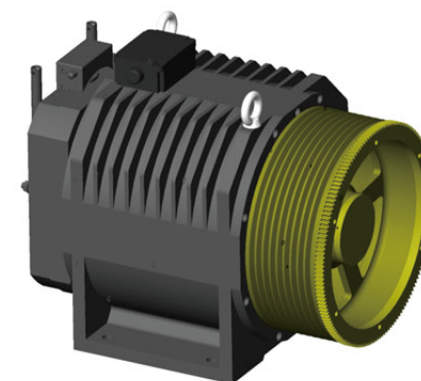
KONDA Home Elevator, inheriting the leading technology of European private elevator industry, adhering to the international classical design concept and combining art, practicality and contemporary, coincides with the high-level taste of villas and private luxury real estate.

曳引式家用电梯的特点

Characteristics of a traction type home elevator

- ◎ 无需传统机房：节省建筑成本
- ◎ 可根据房屋结构的开门需求采用背包架式和龙门架式电梯结构
- ◎ VVVF 驱动技术：家用电梯专用微机板控制，平稳舒适
- ◎ 专用曳引机机架：固定于导轨，建筑物可不承受力
- ◎ 主机：可采用 220V 单相电源，普通家用电源，无需另外申请工业电源
- ◎ 自动专用门机：变频节能，安全可靠
- ◎ UPS（后备电源）在停电时可以应急放人
- ◎ 运行时总额定功率 1.5KW（其中驱动系统 1.1KW）

It does not need machine room. It saves the building cost.
It applies counter level style and gantry style elevator structure according to door opening requirements of the housing structure.
VVVF drive technology: Home elevator dedicated micro-computer control is smooth and comfortable.
Special traction machine base frame is fixed on guiderail. The building does not bear any load.
Machine: It can apply 220V single-phase power supply of ordinary family use. It does not need to apply for industrial power supply.
Automatic door operator: Variable frequency energy-saving, safe and reliable
UPS (backup) can release the passengers during power failure.
In the operation, total rated power is 1.5KW including 1.1KW for drive system.



内转子曳引主机，小巧轻便

Inner Rotor Traction Machine, Small, Light and Convenient

曳引轮双支撑式结构，运行更稳定

别墅梯的理想选择，节能环保、噪音小、性价比高

Double-support structure of traction wheel for more stable operation
Villa ladder ideal choice, energy conservation and environmental protection, low noise, cost-effective



KD-100 (标配)

吊顶：发纹不锈钢 + 筒灯
前壁：发纹不锈钢
侧壁：发纹不锈钢
后壁：发纹不锈钢
轿门：发纹不锈钢
地板：PVC

Ceiling: Hairline stainless steel + downlight
Front wall: Hairline stainless steel
Side wall: Hairline stainless steel
Rear wall: Hairline stainless steel
Car door: Hairline stainless steel
Floor: PVC



轿厢 360° 全景展示

KD-101 (选配)

吊顶：镜面不锈钢，亚克力，筒灯
前壁：发纹不锈钢
侧壁：镜面不锈钢，木纹钢板
后壁：镜面不锈钢，木纹钢板
轿门：发纹不锈钢
地板：PVC

Ceiling: Mirror stainless steel, Acrylic, Downlight
Front wall: Hairline stainless steel
Side wall: Mirror stainless steel, Wood grain steel plate
Rear wall: Mirror stainless steel, Wood grain steel plate
Car door: Hairline stainless steel
Floor: PVC



轿厢 360° 全景展示



KD-102 (选配)

吊顶：镜面不锈钢，亚克力
前壁：发纹不锈钢
侧壁：镜面不锈钢，木纹钢板
后壁：镜面不锈钢，木纹钢板
轿门：发纹不锈钢
扶手：发纹不锈钢圆管
地板：PVC

Ceiling: Mirror stainless steel, Acrylic
Front wall: Hairline stainless steel
Side wall: Mirror stainless steel, Wood grain steel plate
Rear wall: Mirror stainless steel, Wood grain steel plate
Car door: Hairline stainless steel
Handrail: Hairline stainless steel round tube
Floor: PVC



轿厢 360° 全景展示

KD-103 (选配)

吊顶：镜面不锈钢，筒灯
前壁：香槟金发纹不锈钢
侧壁：香槟金发纹不锈钢
后壁：香槟金发纹不锈钢，香槟金镜面蚀刻不锈钢
轿门：香槟金发纹不锈钢
地板：PVC

Ceiling: Mirror stainless steel, downlight
Front wall: Champagne gold hairline stainless steel
Side wall: Champagne gold hairline stainless steel
Rear wall: Champagne gold hairline stainless steel,
Champagne gold mirror etching stainless steel
Car door: Champagne gold hairline stainless steel
Floor: PVC



轿厢 360° 全景展示





KD-104 (选配)

吊顶：镜面不锈钢，筒灯
前壁：钛金发纹不锈钢
侧壁：钛金发纹不锈钢，钛金镜面不锈钢
后壁：钛金发纹不锈钢，钛金镜面不锈钢
轿门：钛金发纹不锈钢
地板：PVC

Ceiling: Mirror stainless steel, Downlight
Front wall: Titanium gold hairline stainless steel
Side wall: Titanium gold hairline stainless steel, Titanium gold mirror stainless steel
Rear wall: Titanium gold hairline stainless steel, Titanium gold mirror stainless steel
Car door: Titanium gold hairline stainless steel
Floor: PVC



轿厢 360° 全景展示



KD-106 (选配)

吊顶：镜面不锈钢，筒灯
前壁：玫瑰金发纹不锈钢
侧壁：玫瑰金发纹不锈钢
后壁：玫瑰金发纹不锈钢，玫瑰金镜面蚀刻不锈钢
轿门：玫瑰金发纹不锈钢
地板：PVC

Ceiling: Mirror stainless steel, Downlight
Front wall: Rose gold hairline stainless steel
Side wall: Rose gold hairline stainless steel
Rear wall: Rose gold hairline stainless steel, Rose gold mirror etching stainless steel
Car door: Rose gold hairline stainless steel
Floor: PVC



轿厢 360° 全景展示

图片系电脑绘制，可能与实际图有不同
The picture is drawn by computer and may be different from the actual picture



KD-107 (选配)

吊顶：玫瑰金发纹不锈钢，镜面不锈钢，LED 灯饰
前壁：玫瑰金发纹不锈钢
侧壁：玫瑰金发纹不锈钢
后壁：玫瑰金发纹不锈钢，玫瑰金镜面蚀刻不锈钢
轿门：玫瑰金发纹不锈钢
地板：PVC

Ceiling: Rose gold hairline stainless steel, Mirror stainless steel, LED tube light
Front wall: Rose gold hairline stainless steel
Side wall: Rose gold hairline stainless steel
Rear wall: Rose gold hairline stainless steel, Rose gold mirror etching stainless steel
Car door: Rose gold hairline stainless steel
Floor: PVC



轿厢 360° 全景展示

KD-108 (选配)

吊顶：镜面不锈钢，亚克力，LED
前壁：钛金发纹不锈钢
侧壁：钛金发纹不锈钢，钛金镜面蚀刻不锈钢
后壁：钛金发纹不锈钢，钛金镜面蚀刻不锈钢
轿门：钛金发纹不锈钢
地板：PVC

Ceiling: Mirror stainless steel, acrylic, LED
Front wall: Titanium gold hairline stainless steel
Side wall: Titanium gold hairline stainless steel, Titanium gold mirror etching stainless steel
Rear wall: Titanium gold hairline stainless steel, Titanium gold mirror etching stainless steel
Car door: Titanium gold hairline stainless steel
Floor: PVC

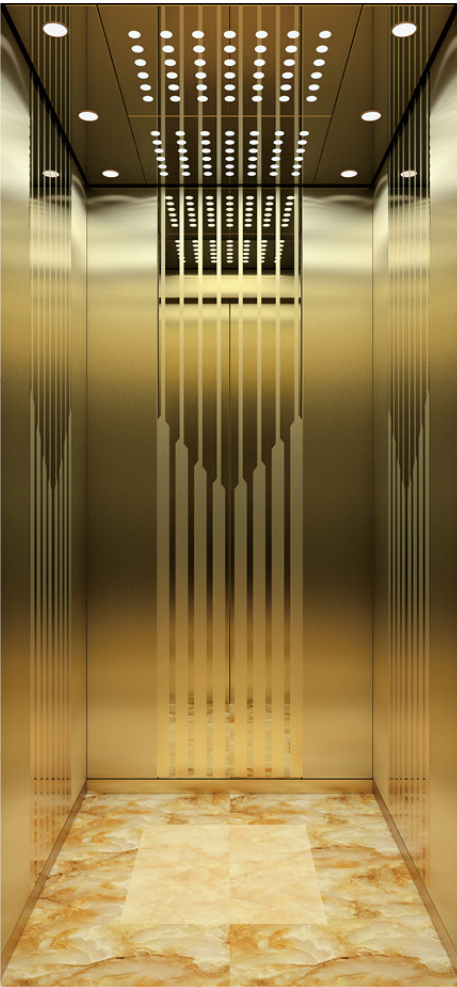


轿厢 360° 全景展示

图片系电脑绘制，可能与实际图有不同
The picture is drawn by computer and may be different from the actual picture



轿厢装潢



KD-109 (选配)

吊顶：钛金镜面不锈钢，中间有机灯饰，LED 灯
前壁：钛金发纹不锈钢
侧壁：钛金发纹不锈钢，钛金镜面蚀刻不锈钢
后壁：钛金发纹不锈钢，钛金镜面蚀刻不锈钢
轿门：钛金发纹不锈钢
地板：PVC

Ceiling: Mirror stainless steel ,Intermediate organic lighting, LED lights
Front wall: Titanium gold hairline stainless steel
Side wall: Titanium gold hairline stainless steel, Titanium gold mirror etching stainless steel
Rear wall: Titanium gold hairline stainless steel, Titanium gold mirror etching stainless steel
Car door: Titanium gold hairline stainless steel
Floor: PVC



轿厢 360° 全景展示



KD-110 (选配)

吊顶：镜面不锈钢，LED 筒灯
前壁：发纹不锈钢
侧壁：木纹钢板
后壁：镜面蚀刻不锈钢，木纹钢板
轿门：发纹不锈钢
地板：PVC

Ceiling: Mirror stainless steel, LED tube light
Front wall: Hairline stainless steel
Side wall: Wood grain steel plate
Rear wall: Mirror etching stainless steel, Wood grain steel plate
Car door: Hairline stainless steel
Floor: PVC



轿厢 360° 全景展示

图片系电脑绘制，可能与实际图有不同
The picture is drawn by computer and may be different from the actual picture

人机界面



COP-01
标配 Standard
一体式 Integrated



KY-H003
标配 Standard



COP-02
选配 Optional



LOP-02
选配 Optional

触摸屏
Touch screen series

Handrail

扶手



FS-F001 标配 Standard
发纹不锈钢单管
Hairline stainless steel mono-tube



FS-F002 选配 Optional
镜面钛金不锈钢单管
Titanium gold mirror stainless steel mono-tube



FS-F003 选配 Optional
不锈钢，钛金组合
Combination of stainless steel and titanium gold



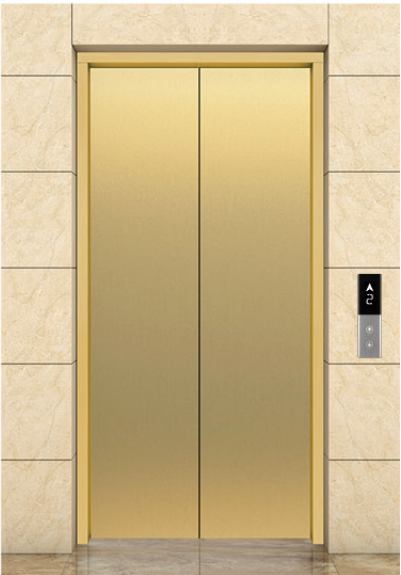
FS-F004 选配 Optional
圆木和钛金组合
Combination of round wood and titanium gold

图片系电脑绘制，可能与实际图有不同
The picture is drawn by computer and may be different from the actual picture

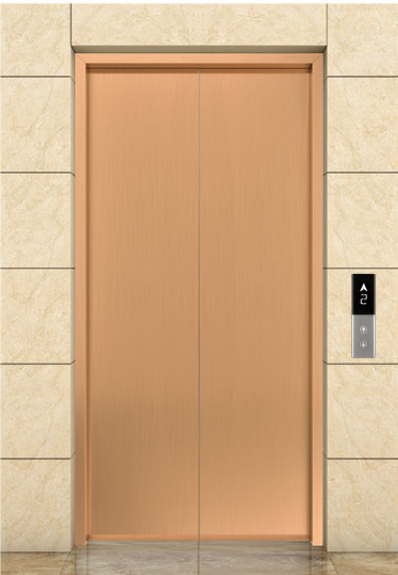
自动门系列



TM-001
标配 Standard
发纹不锈钢
Hairline stainless steel



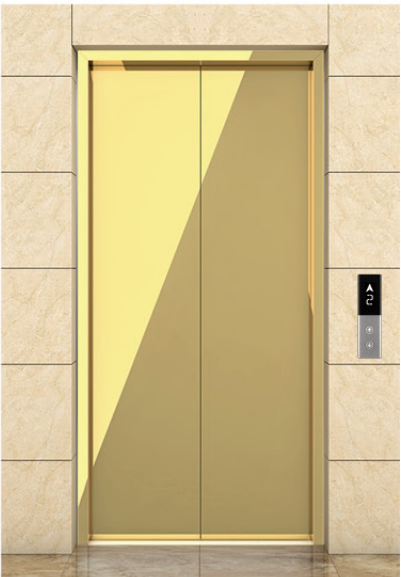
TM-002
选配 Optional
钛金发纹不锈钢
Titanium gold hairline stainless steel



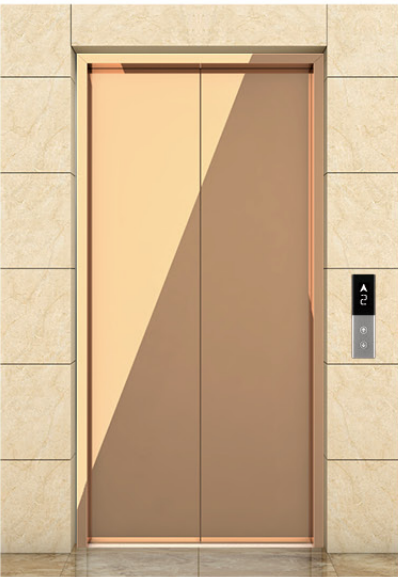
TM-003
选配 Optional
玫瑰金发纹不锈钢
Rose gold hairline stainless steel



TM-004
选配 Optional
镜面不锈钢
Mirror stainless steel



TM-005
选配 Optional
钛金镜面不锈钢
Titanium mirror stainless steel



TM-006
选配 Optional
玫瑰金镜面不锈钢
Rose gold mirror stainless steel

图片系电脑绘制，可能与实际图有不同
The picture is drawn by computer and may be different from the actual picture

电梯功能



全面保护
General protection

- 轿厢内紧急照明 (ESL)
Emergency lighting in the car (ESL)
- 光幕门保护 (SLC)
Light curtain door protection (SLC)
- 故障自诊断 (SLP)
Fault self-diagnosis (SLP)
- 轿厢警铃 (AB)
Car alarm (AB)
- 缓冲器安全保护 (BUFFER)
Buffer safety protection (BUFFER)
- 抱闸反馈检测功能 (BG)
Brake feedback detection function (BG)
- 接触器反馈检测 (CNRP)
Contactor feedback detection (CNRP)
- 下行超速保护 (DOSP)
Downward overspeed protection (DOSP)
- 上行超速保护 (UOSP)
Upward overspeed protection (UOSP)
- 开机自检保护 (MSCP)
Power-on self-test protection (MSCP)
- 马达防堵转功能 (ALRPF)
Motor anti-blocking function (ALRPF)
- 轿顶检修操作 (IO)
Car top inspection operation (IO)
- 超载保护 (OP)
Overload protection (OP)
- 门联锁保护 (DI)
Door interlock protection (DI)
- 重新初始化运行 (RO)
Reinitialization operation (RO)
- 关门力矩保护 (DR)
Door closing torque protection (DR)
- 方向反馈检测 (RMG)
Directional feedback detection (RMG)
- 防止轿厢意外移动
Unexpected car movement protection
- 防止轿门被强制扒门
Protection against manual opening of the car door
- 供电电源反馈检测 (AMEPD)
Power supply feedback detection (AMEPD)
- 紧急消防操作 (EFO)
Emergency Fire Operations (EFO)
- 停机开关 (PS)
Power-off Switch (PS)



平稳运行
Steady running

- 全集选 (FSC)
Full selective (FSC)
- 非平层区不开门 (LZG)
Anti-opening in non-leveling zone (LZG)
- 故障存储 (FS)
Fault memory(FS)
- 基站设定 (MFS)
Base station setting (MFS)
- 特定层服务功能 (FCPS)
Specific layer services (FCPS)
- 节能待机 (ATOO)
Energy-saving standby (ATOO)
- 满载直驶 (FLP)
Full load by pass (FLP)
- 井道位置自学习 (SLSD)
Shaft position self-learning (SLSD)
- 端站强制换速 (FSSES)
End station forced speed change (FSSES)
- 启动时力矩补偿 (TC)
Torque compensation at starting (TC)
- 司机直驶 (BS)
Driver Straight (BS)
- 司机操作 (AO)
Driver Operation (AO)



信息显示
Information display

- 楼层显示定制 (FMFS)
Floor display customization (FMFS)
- 到站钟 (AG)
Arrival Gong (AG)
- 数字式楼层显示 (DMPI)
Digital Floor Display (DMPI)
- 外呼提醒 (BUZZER)
Hall Call Buzzer (BUZZER)



舒适乘行
Comfortable ride

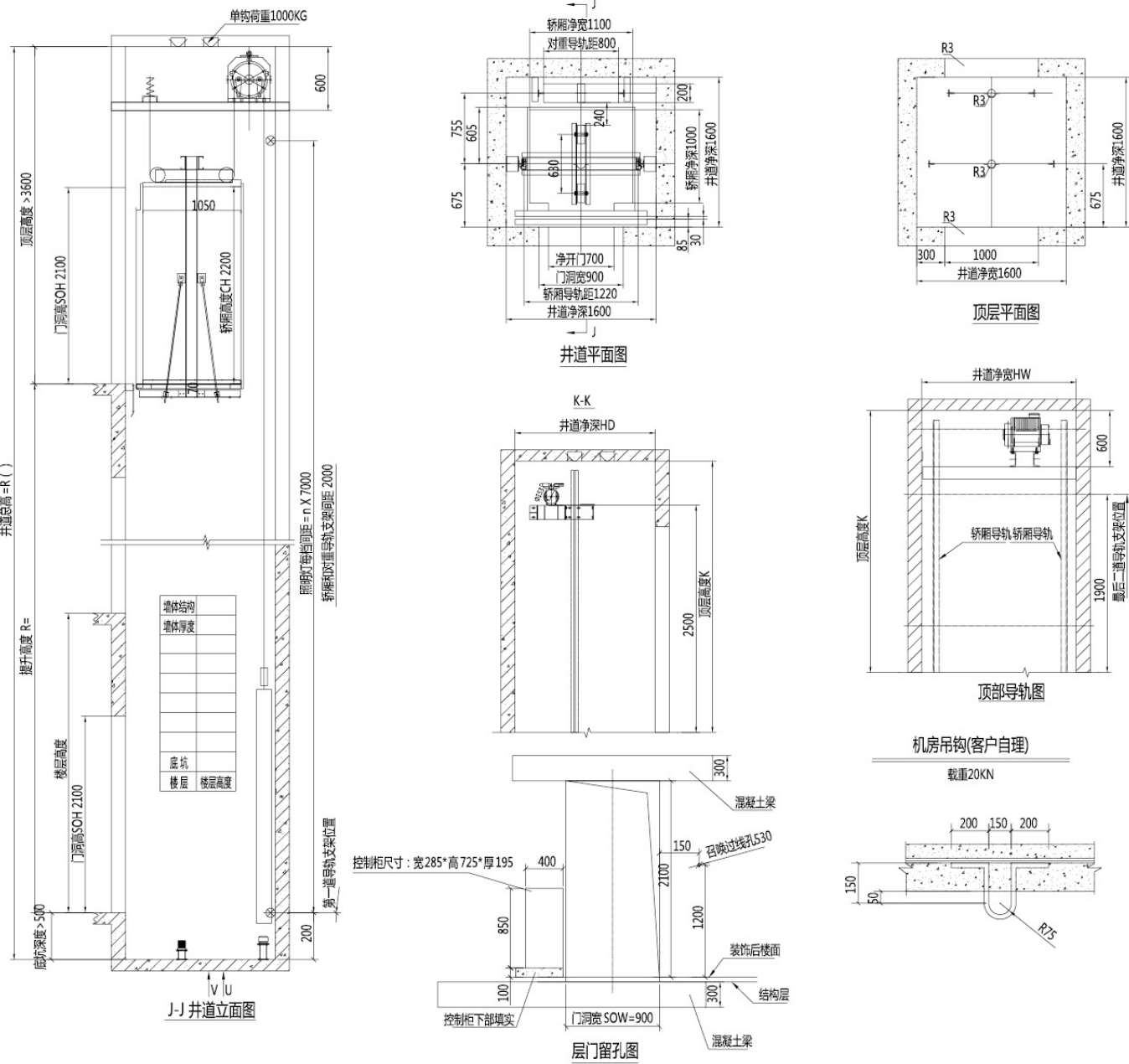
- 开、关按钮 (DOB/DCB)
Door opening / closing button (DOB/DCB)
- 开、关按钮灯 (DOBL/DCBL)
Door opening / closing button light (DOB/DCB)
- 本层厅外开门 (RE-OP)
Outside door opening on this floor (RE-OP)
- 错误指令取消 (CCR)
Error command cancellation (CCR)
- 防捣乱保护 (ANCCP)
Anti-nuisance protection (ANCCP)
- 内部通话装置 (FSI)
Intercom (FSI)



保安监控
Security monitoring

- 别墅电梯专用电话装置
(电话及信号开通由甲方自理)
Home elevator dedicated telephone
(Party A takes care of the telephone and signal activation)

土建规格及尺寸



别墅电梯参数表
Villa elevator parameter table

载重量 (kg) Rated Load	额定速度 (m/s) Rated Speed	开门方式 (mm) Opening Door Mode	开门宽度 (mm) Opening Door Width	开门高度 (mm) Opening Door Height	轿厢尺寸 (mm) Car size			井道尺寸 (mm) Shaft size		顶层高度 (mm) Overhead Height	底坑深度 (mm) Pit Depth	最大停站数 (层) MAX.number of stops	最大提升高度 (m) MAX. Travel Height
					宽 Width	深 Depth	高 Height	宽 Width	深 Depth				
320	0.4	中分门	700	2000	1100	1000	2200	1600	1600	3600	500	4	9
400	0.4	中分门	700	2000	1200	1100	2200	1700	1700	3600	500	4	9

我们的服务



全心全意为客户
Wholehearted services for vast clients

我们坚信一件产品达到完美水准，其卓越的品质不是全部，只有再加上高标准的服务保障，才能真正为客户创造最大价值，客户才能真正获得该产品带来的超值享受。

We are firmly convinced that the perfect condition of every product shall include high standsrd service warranty. So it can truly create maximum value for broad customers. And the clients can truly enjoy value-exceeding experience from the products.

温情解析 量身定制
Warm analysis, specially custom-made for you

专人负责跟踪客户项目，努力为客户提供性价比最高的产品。

It has special peolpe to be responsible for tracking the customers' projects. We try our best to provide the clients with the products with maximum cost performance.

公平买卖 诚实守信
Honest, impartial and promisekeeping business

恪守合同条款，产品按时发货、按时安装、按时交付使用，是康达最朴实的承诺。

It abides by the contract clauses, promptly deliver the products with in-time installation and use. It is most fundamental pledge of KONDA Elevator.

后顾之忧 满意一百
The clients can rest assured in buying KONDA Elevators with 100% satisfaction rate.

1 年免保期，24 小时服务中心热线，最近的维保人员应急响应，康达提供的服务是值得终生相托。

KONDA offers life-long trustworthy services such as one-year free maintenance period, 24-hour service center hot-line, emergency response from the nearest repairers & maintainers etc.